

## INSTALLATION INSTRUCTIONS

DESCRIPTION: Competition Kit/ECU

PART NUMBER: BDB-E9500-V0

MODEL: 2021+ WR450F



### **WARNING**

Please read and understand these instructions completely before installation to avoid possible injury, or damage to the accessory or vehicle.

### **IMPORTANT:**

*Alteration of emission-related components constitutes tampering under Federal and State laws and can lead to substantial fines and penalties if used other than in closed-course competition. The modifications contained in these instructions are for closed-course competition use only.*

### **REQUIRED TOOLS:**

In addition to a torque wrench and common hand tools, you will need a tamper proof T25 Torx® bit for this installation.

### **WARRANTY INFORMATION:**

In the United States, see your authorized Yamaha dealer for a copy of the Yamaha Genuine Parts and Accessories Limited Warranty.

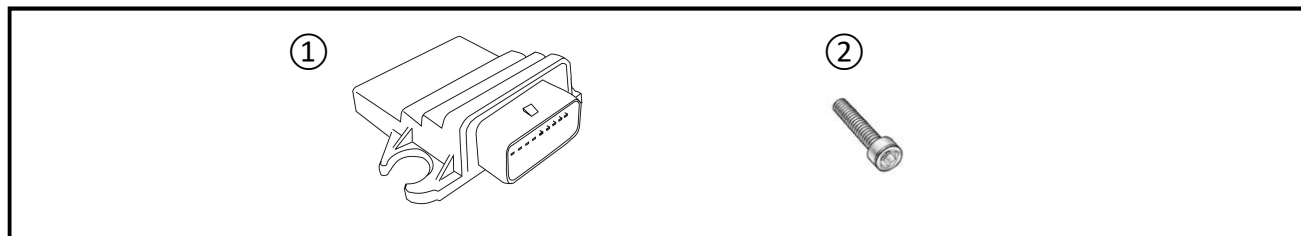
### **DEALER OR INSTALLER:**

These instructions contain important information for future reference and *must* be given to the customer.

### **NOTICE:**

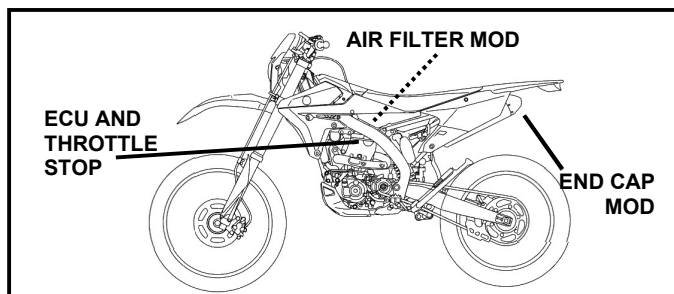
Installation of this kit and its modifications requires specialized tools, and training, as well as the Owner's Service Manual for the model. This installation should be performed by an authorized Yamaha dealer or a qualified mechanic.

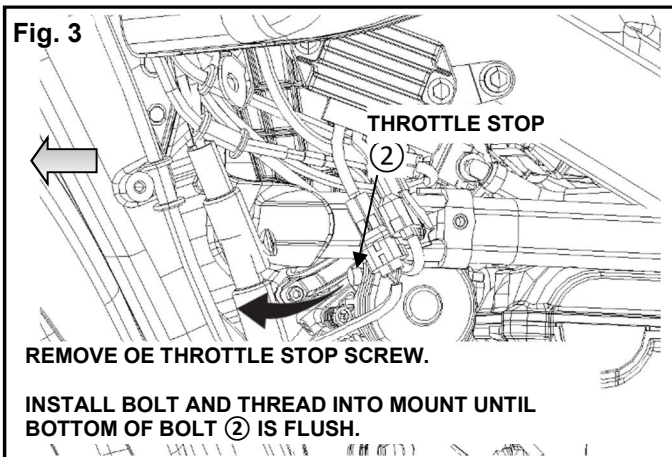
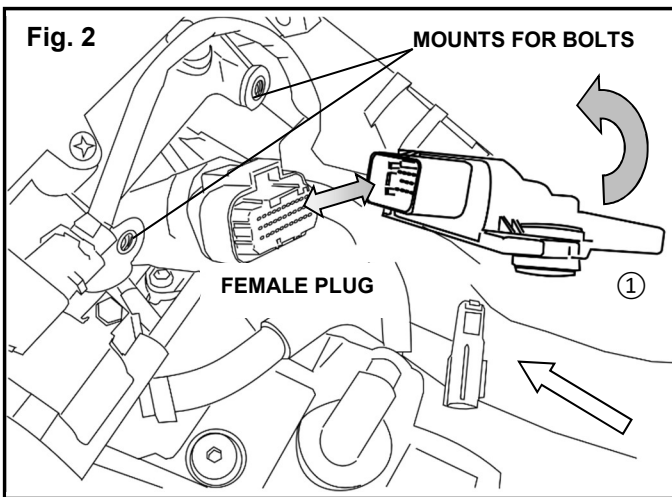
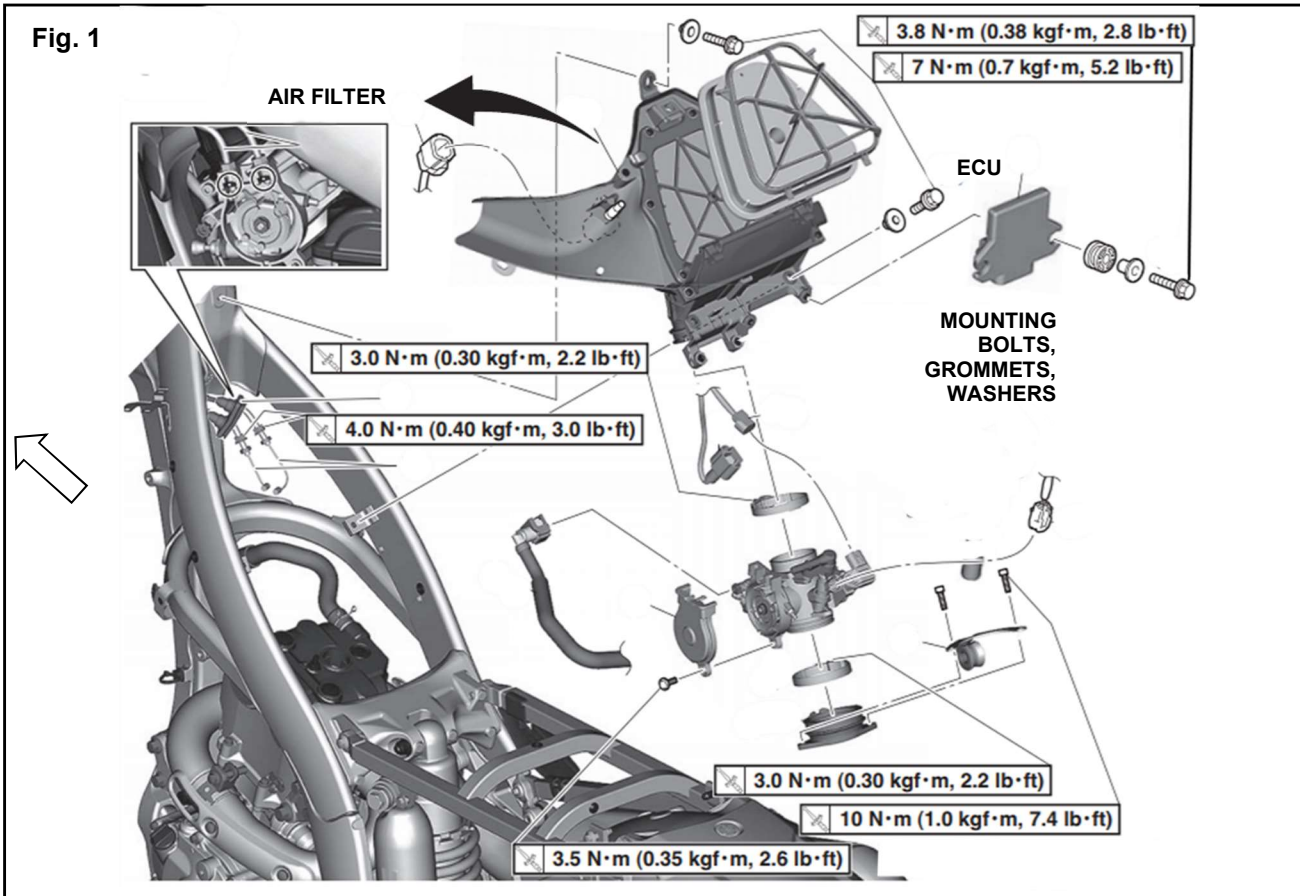
### **PARTS LIST:**



No.	Part Number	Description	Qty
	BDB-E9500-V0	ECU and Throttle Stop Kit	--
①	*	ECU module	1
②	*	Socket Head Bolt	1

\* Part supplied with kit only and not available separately.



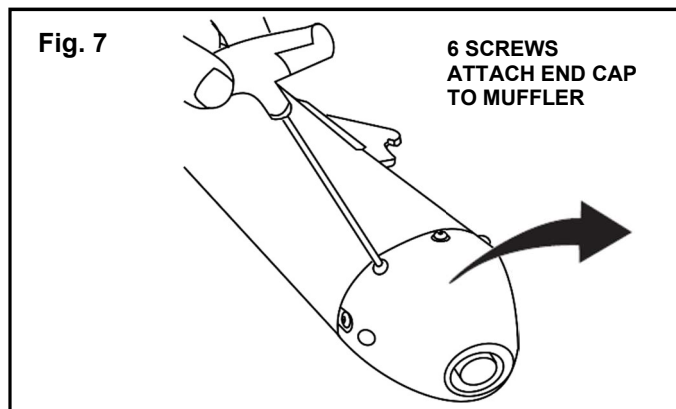
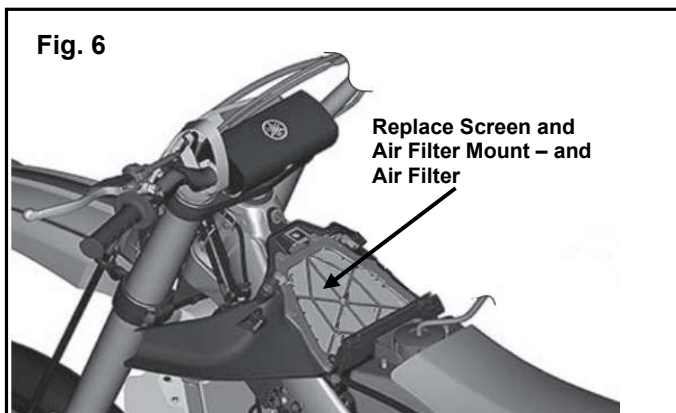
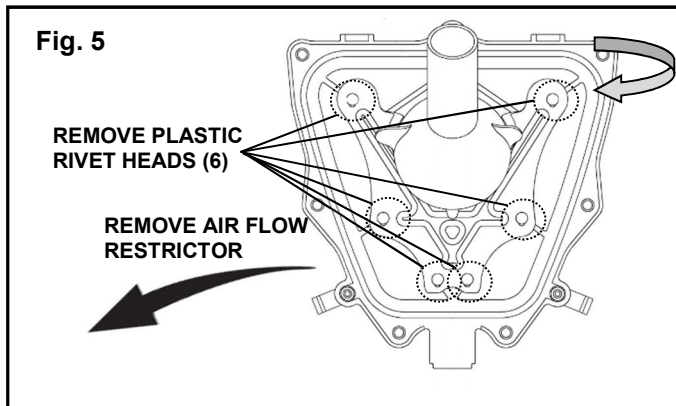
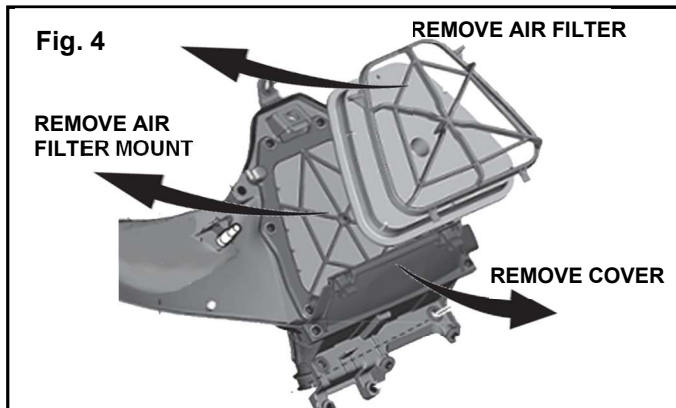


**PREPARATION:**

1. Place vehicle on a secure and level surface.
2. Clean all mounting surfaces before beginning installation.

**INSTALLATION:**

1. Follow the Owner's Service Manual instructions to remove the seat. Retain the screws for reinstallation. Remove the left side fairing and retain hardware for reuse.
2. Lift the gas tank up and swing it to the rear of the bike (Fig. 1). If there is a fuel sensor, disconnect the sensor wire.
3. Locate the OEM ECU module and remove its mounting bolts, washers, and spacers. Retain them for reuse (Fig. 1).
4. Disconnect the plug from the OEM ECU module. Remove the OEM module (Fig. 2).
5. Connect the plug to the new ECU module ①.
6. Install the new ECU ① using OEM washers, spacers, and bolts. Torque to 3.8 Nm (0.38 m·kgf, 2.8 ft·lbf) (Fig. 1).
7. Working from the left side of the motorcycle, locate the fuel injection throttle body (Fig. 3).



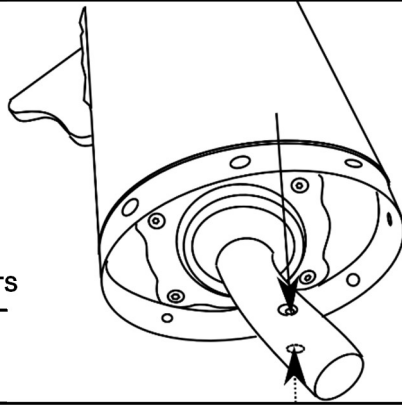
8. Use a tamper proof T25 Torx bit to remove the OEM throttle stop screw (Fig. 3).
9. Install the ② Socket Head Bolt to the throttle body (Fig. 3). Torque the bolt to 5Nm (3.7 ft-lbf).
10. Remove the air filter. Retain filter for reuse (Fig. 4)
11. Remove the cover from the stock air filter/air box assembly as shown in Fig. 4.
12. Remove the Phillips head screws that hold the air filter mount to the air box. Retain for reuse.
13. Remove the air filter mount and turn it over.
14. Grind off or cut off the 6 plastic rivet heads that attach the air restrictor to the air filter mount. See Fig. 5. Trim the rivet stalks flush. **NOTICE: Do not damage the mesh screen or the support arms of the air filter mount while removing the plastic rivets.**
15. Remove the air restrictor. It will not be reused. **NOTICE: Clean the air filter mount carefully to remove any debris from the plastic rivet removal so it cannot fall into the engine.**
16. Reinstall the steel mesh screen using the stock screws. See Fig. 6. Torque to screws to 2.5 Nm (0.3 m-kgf, 1.8 ft-lbf).
17. Clean and service the air filter if needed. Install the air filter.
18. Install the cover to the air filter/air box assembly.
19. Remove the stock muffler. Refer to the service manual for diagrams and instructions.
20. Remove the stock muffler end cap. Retain the screws for reuse (Fig. 7).
21. Drill out the rivets that hold the muffler restrictor in place (Fig. 8).
22. Remove the muffler restrictor from inside the muffler exhaust tube.
23. Reinstall the muffler end cap. Use the stock screws (Fig.7). Torque screws to 8 Nm (0.8 m-kgf, 5.8 ft-lb).
24. Install the muffler. Refer to the service manual for diagrams and instructions.
25. Install the gas tank and seat. Refer to the service manual for diagrams and instructions.

#### GYTR® POWER TUNER

Refer to the GYTR CCU instructions for further guidelines/instructions.

**Note:** See the Yamaha website for power tuner settings. The settings on the website are a general starting point. Many factors affect settings, including rider preference, accessories, modifications, race course, and atmospheric conditions.

**Fig. 8**



**DRILL OUT RIVETS  
ON BOTH SIDES -  
REMOVE  
RESTRICTOR**

**MAINTENANCE:**

Periodically check fasteners for tightness and re-torque as necessary. Service the air filter as needed, using Yamalube Foam Air Filter Oil, or a high-quality equivalent.

**CARE AND CLEANING:**

Wash with a mild soap and water solution and soft cloth.

**CUSTOMER SERVICE:**

For further information see your Yamaha dealer.

**ESTIMATED TIME TO INSTALL: 1.2 HRS**